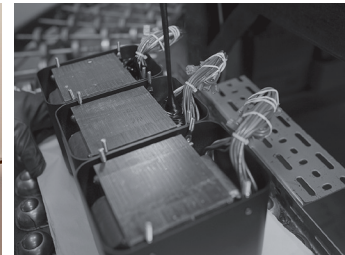


MC901 dual mono power amplifier

- The MC901 Dual Mono Amplifier is truly a one-of-a-kind monoblock amplifier designed as the ultimate solution for bi-amping loudspeakers.
- What makes the MC901 so unique is that it's two amplifiers combined into one. Adding to the uniqueness is that each amplifier is of differing designs: the MC901 consists of a 300 Watt vacuum tube amplifier attached to a 600 Watt solid state amplifier on one unified chassis.
- The 300 Watt vacuum tube portion powers the mid and upper drivers; the 600 Watt solid state section drives the power hungry woofers.
- The full power is available to almost any speaker regardless if it has 2, 4 or 8 Ohm impedance via our Unity Coupled Circuit output transformer in the vacuum tube section or our Autoformer™ in the solid state section.
- Each amplifier section has its own discrete power supply so neither siphons power or performance away from the other.
- Internal, adjustable crossover allows you to optimize the performance of both amplifier sections to your listening preferences.
- Features our new DualView™ Power Output Meter that independently displays the real time power reading of each amplifier section.
- Power Guard® helps prevent distortion and clipping in the solid state section. New Power Guard Screen Grid Sensor™ (SGS) helps prevent premature vacuum tube failure by monitoring the screen grid current in the KT88 output vacuum tubes. If the current becomes too high, Power Guard SGS™ dynamically attenuates the input signal in real time to keep the vacuum tubes operating at safe levels.



One-of-a-Kind Solution for Bi-amping Loudspeakers

McIntosh®

LEGENDARY PERFORMANCE®

www.mcintoshlabs.com

MC901 dual mono power amplifier

Power Output:

Solid State section:
600 Watts into 2, 4 or 8 Ohms
Vacuum Tube section:
300 Watts into 2, 4 or 8 Ohms

Total Harmonic Distortion:

Solid State section:
0.005% maximum from 20Hz to 20kHz
Vacuum Tube section:
0.5% maximum from 20Hz to 20kHz

Signal to Noise Ratio:

Solid State section: 122dB
Vacuum Tube section: 112dB

Dynamic Headroom:

Solid State section: 2.5dB
Vacuum Tube section: 1.2dB

Damping Factor:

Solid State section: >40
Vacuum Tube section: >18

Frequency Response:

Solid State section:
+0, -0.25dB from 20Hz to 20,000Hz
+0, -3dB from 10Hz to 100,000Hz
Vacuum Tube section:
+0, -0.5dB from 20Hz to 20,000Hz
+0, -3dB from 10Hz to 70,000Hz

Inputs:

3 Balanced
3 Unbalanced
(1 each for Solid State, Vacuum Tube,
and Composite)

Overall Dimensions (W x H x D):

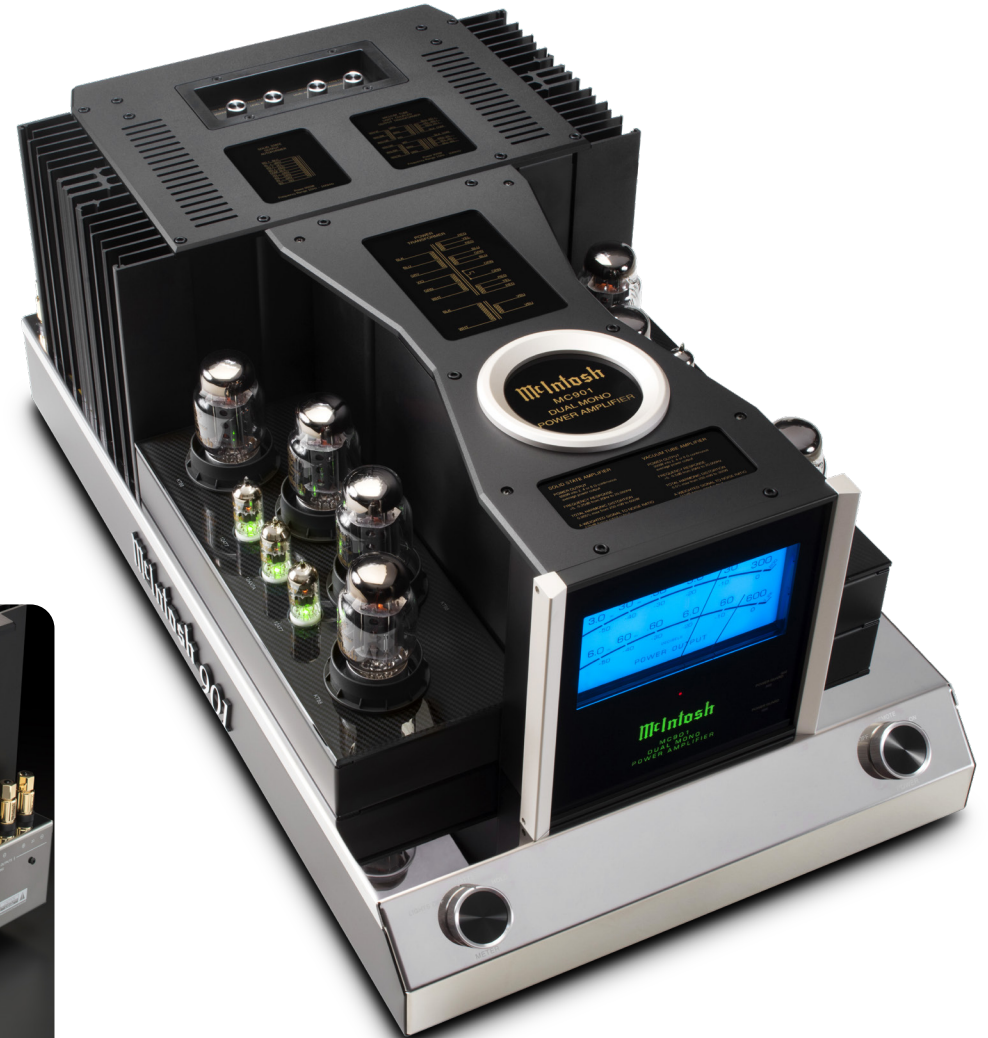
17-1/2" (44.45cm) x 13-1/4" (33.7cm)
x 29-1/2" (74.9m)

Weight:

180 lbs (81.6 kg) net,
200 lbs (90.7 kg) in shipping carton

For the Consumer's Protection:

In order to ensure the highest level of customer satisfaction, new McIntosh products may only be purchased from an Authorized McIntosh Dealer; and, with certain limited exceptions may only be purchased over-the-counter or delivered and installed by the Authorized McIntosh Dealer. McIntosh does not warrant, in any way, products that are purchased from anyone who is not an Authorized McIntosh Dealer, or that have had their serial numbers altered or defaced.



Companion Products

The C1100 or C53 Preamplifier, MT10 Precision Turntable, MCD600 SACD/CD Player, MS500 Music Streamer, MB50 Streaming Audio Player, MR87 AM/FM Tuner, MEN220 Room Correction System, MPC1500 Power Controller, and XRT2.1K or XRT1.1K Loudspeakers are logical companions for the MC901 Power Amplifier. Your Authorized Dealer can provide additional information on other McIntosh product combinations.

To learn more, please call us at 1.800.538.6576.

McIntosh®

LEGENDARY PERFORMANCE®

www.mcintoshlabs.com