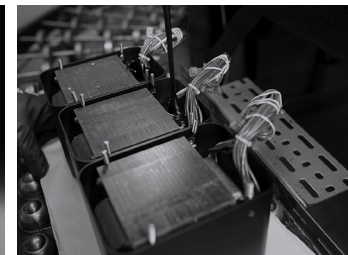


MC1502 power amplifier

- The MC1502 Vacuum Tube Amplifier is a 150 Watt stereo amplifier. It's a direct replacement to our award winning MC2152 Limited Edition 70th Anniversary Vacuum Tube Amplifier and has identical audio specifications and sound reproduction performance but in a more customary McIntosh design.
- Shares the timeless styling of our classic MC275 Vacuum Tube Amplifier. And with twice the stereo power rating of the MC275 (150 Watts vs. 75 Watts) and is physically larger, in many ways the MC1502 can be considered the MC275's big brother.
- Uses our Unity Coupled Circuit output transformer technology to deliver the full 150 Watts to almost any pair of speakers regardless if they have 2, 4 or 8 Ohm impedance.
- Powered by (8) KT88 output tubes, plus (4) 12AX7A and (4) 12AT7 signal tubes. The tubes are covered by a 12-gauge stainless steel wire cage with a black powder coated finish.
- The vacuum tubes sit atop the precision formed stainless steel chassis polished to a mirror finish.
- Sentry Monitor™ technology monitors the output current and shuts the amplifier off if it ever exceeds safe limits. Also includes our Solid Cinch™ speaker binding posts and Power Control.



A Classic. Supersized.

McIntosh®

LEGENDARY PERFORMANCE®

www.mcintoshlabs.com

MC1502 power amplifier

Power Output:

150 Watts into 2, 4 or 8 Ohm speakers

Total Harmonic Distortion:

0.5% maximum from 20Hz to 20kHz

Signal to Noise Ratio:

112dB

Dynamic Headroom:

1.2dB

Damping Factor:

Greater than 18

Frequency Response:

+0, -0.25dB from 20Hz to 20kHz
+0, -3.0dB from 10Hz to 70kHz

Inputs:

2 Balanced
2 Unbalanced

Overall Dimensions (W x H x D):

18-1/4" (46.4cm) x 10-1/4" (26cm)
x 21" (53.3cm)

Weight:

118 lbs (53.5kg) net,
135 lbs (61.2kg) in shipping carton

For the Consumer's Protection:

In order to ensure the highest level of customer satisfaction, new McIntosh products may only be purchased from an Authorized McIntosh Dealer; and, with certain limited exceptions may only be purchased over-the-counter or delivered and installed by the Authorized McIntosh Dealer. McIntosh does not warrant, in any way, products that are purchased from anyone who is not an Authorized McIntosh Dealer, or that have had their serial numbers altered or defaced.

**Companion Products**

The C2700 or C22 Vacuum Tube Preamplifier, MT10 Precision Turntable, MCD600 SACD/CD Player, MS500 Music Streamer, MEN220 Room Correction System, MPC1500 Power Controller and XRT1.1K Loudspeakers are logical companions for the MC1502 Power Amplifier. Your Authorized Dealer can provide additional information on other McIntosh product combinations. To learn more, please call us at 1.800.538.6576.

McIntosh®

LEGENDARY PERFORMANCE®

www.mcintoshlabs.com